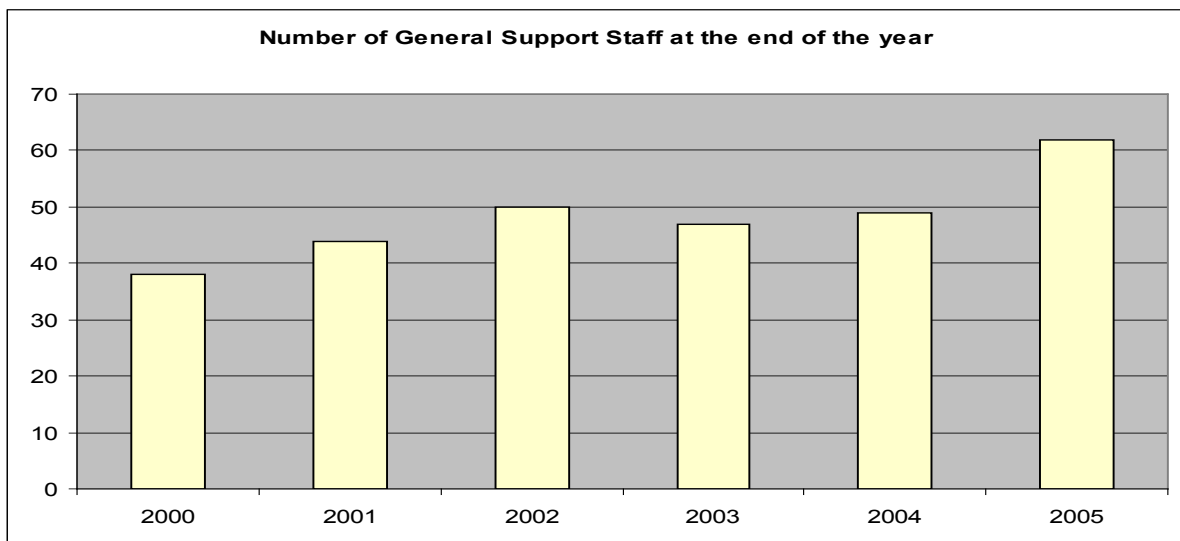
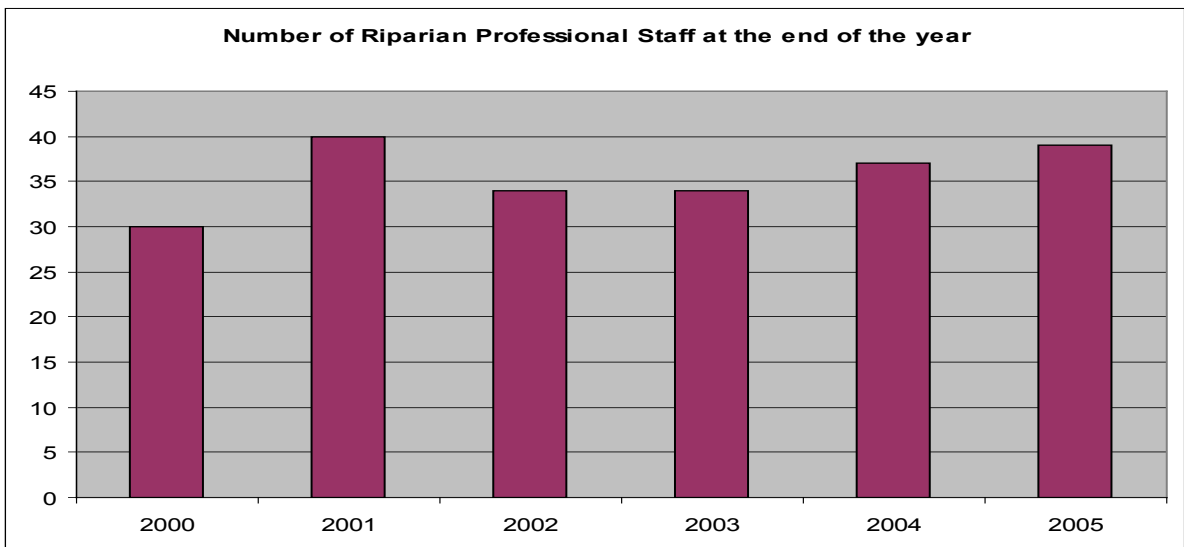
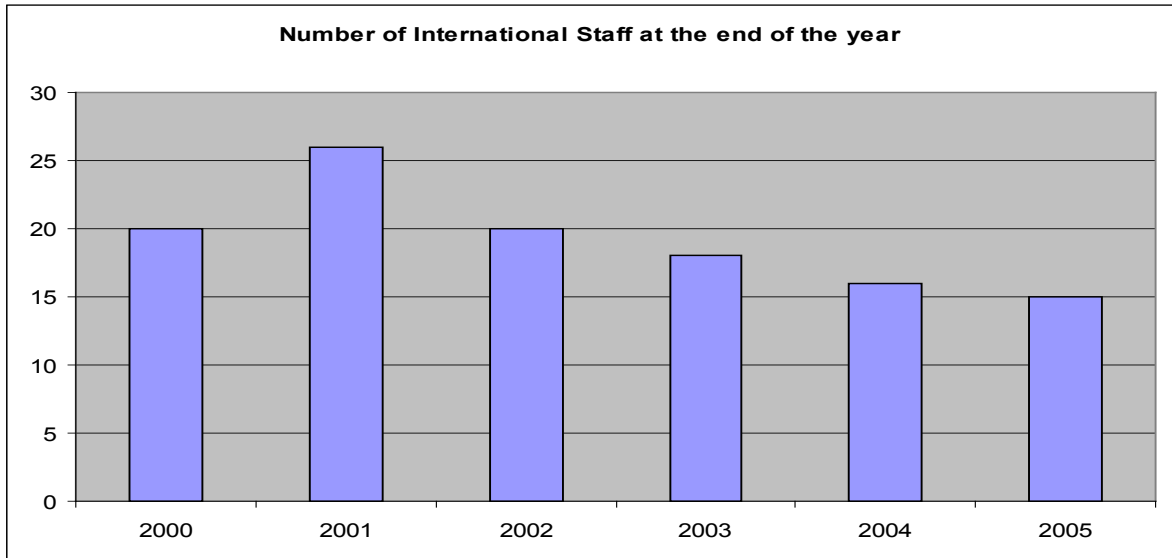
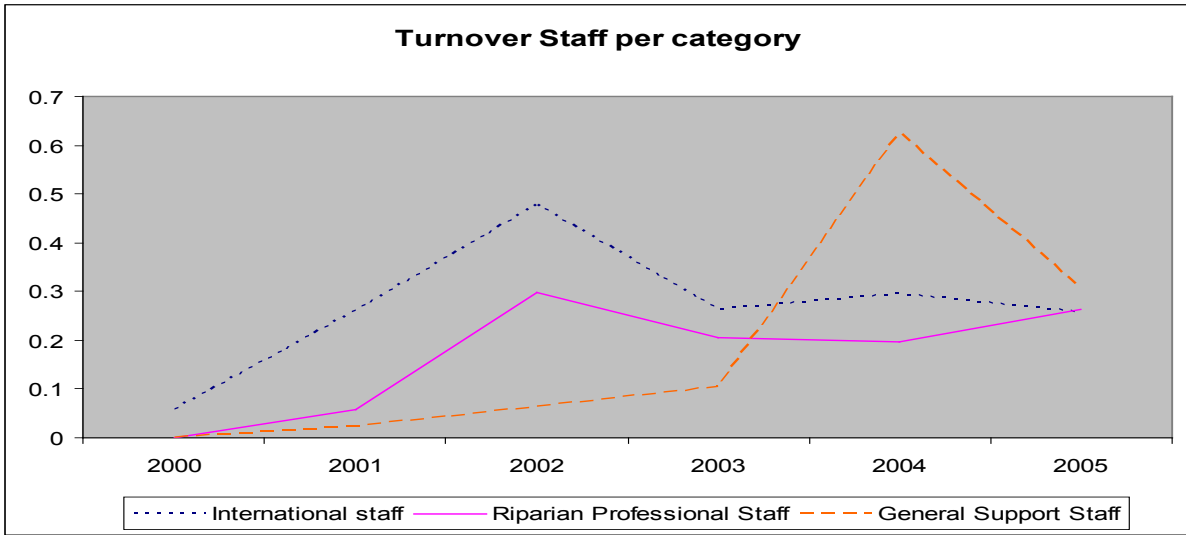
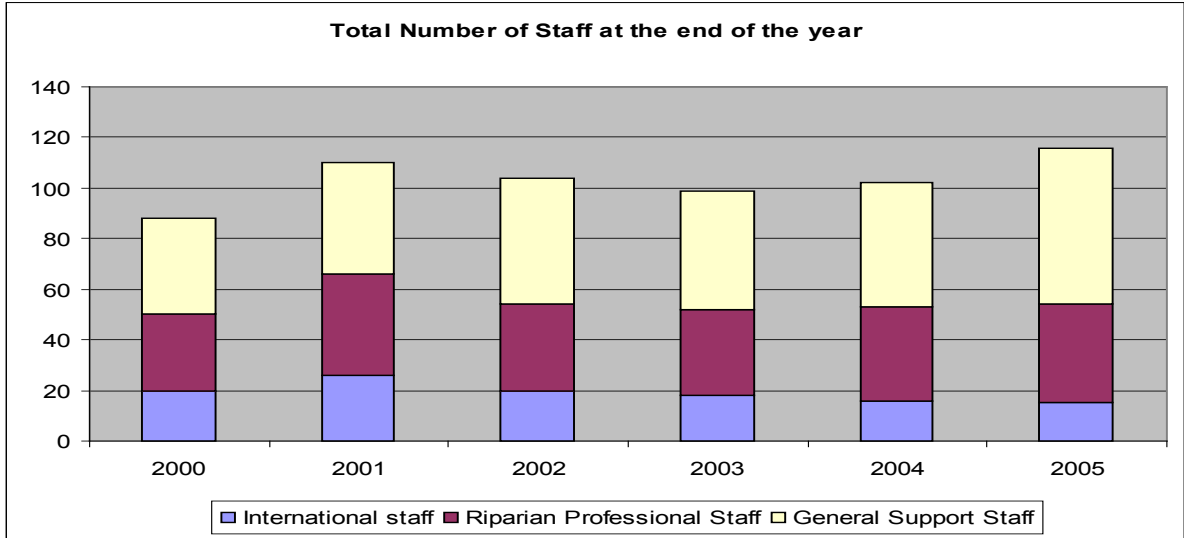
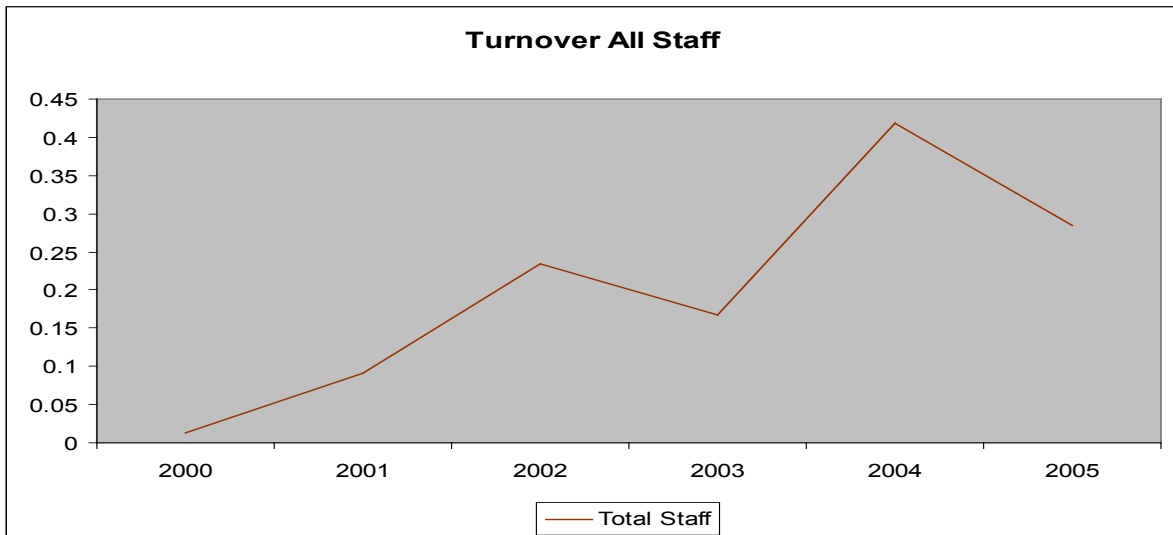


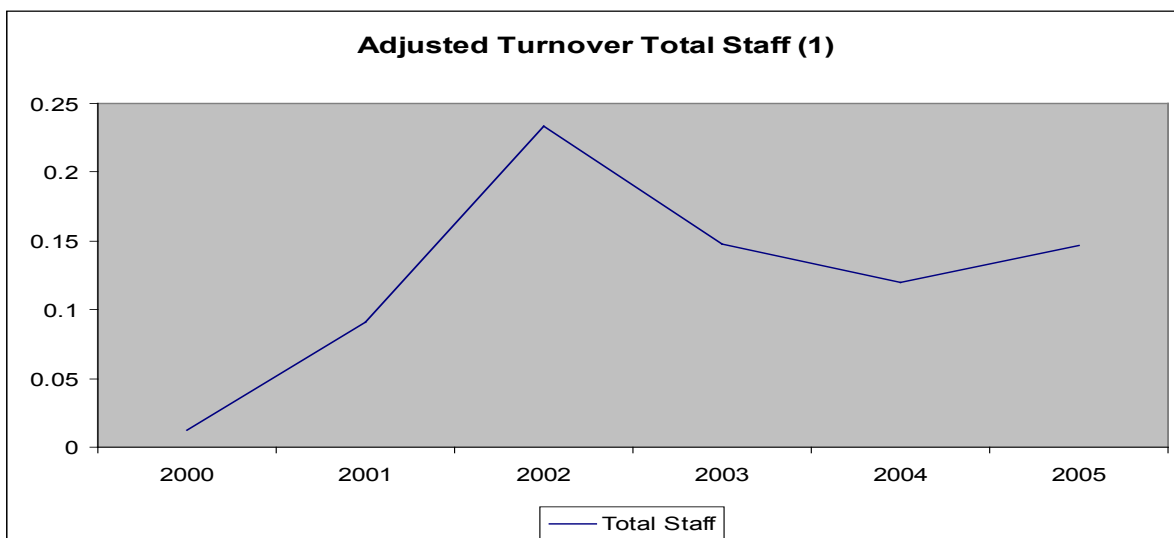
Attachment 4: MRCS staffing data (source: MRCS)





Note: The peak in 2004 for General Support staff is due to the phasing out of Cambodian staff related to the relocation





(1) Turnover excluding departures due to MRC procedures related to Riparian Professional Staff and Relocation.

Note: The peak in 2002 is due to reduction of Danida funding of the fisheries programme after its start-up

